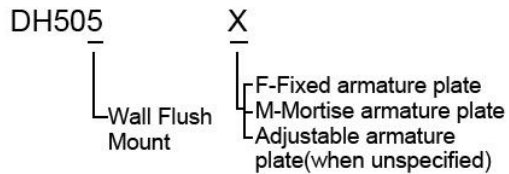


# DOOR HOLDER

## DH505

### ORDERING INFORMATION



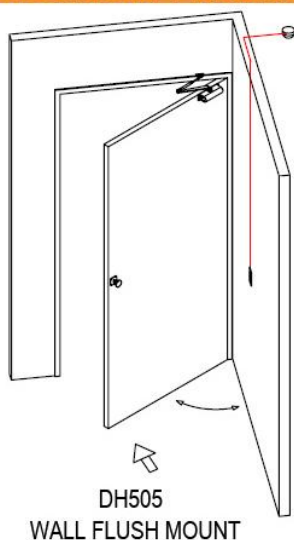
### SPECIFICATIONS

- Voltage: 12VDC / 24VDC
- Current Draw:  
100mA/12VDC , 50mA/24VDC
- Holding Force: about 50 KGS.
- Built-in voltage spike suppressor
- Adjustable or fixed armature plate

### FEATURES

The DH series door holder is a fail-safe unit energized by a power supply installed on large-scale building, between fire escape doors. It releases the armature plate allowing the door closer to close the door when the fire prevention system detects a fire alarm or emergency.

### SUGGESTED APPLICATION



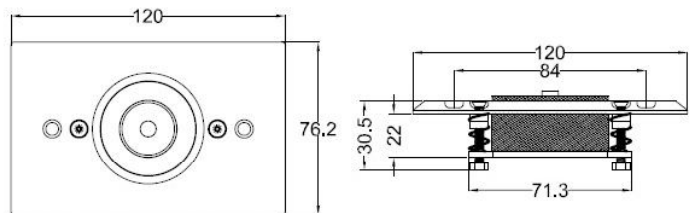
### ADJUSTABLE STEEL CORE

Adjustable Distance: 10mm



### DIMENSIONS

- DH505 : 120Lx76.2Wx30.5H mm



S-AP702 : 60Lx60Wx55.5H mm

S-AP702F : 60Lx60Wx24H mm

### ARMATURE PLATE INSTALLATION

